

LCC Modelling System

B 70-02 Bundle: lineside warehouse low relief version

Bundle contains:

- LCC 70-09 x1
- LCC 70-13A x1
- LCC 70-41 x1
- LCC 74-08 x2
- LCC 74-09 x2
- LCC 74-11 x2
- LCC 74-12 x1
- LCC 74-14A x3
- LCC 74-18L x1
- LCC 74-18LA x1
- LCC 74-18R x1
- LCC 74-18RA x1
- LCC 74-26 x1
- LCC 74-43 x1
- LCC 74-44 x2
- LCC 74-45 x1
- LCC 74-46 x1
- LCC 74-61 x2
- LCC 74-62 x2
- LCC 74-63 x2
- LCC 74-64 x2
- LCC 74-65 x1
- LCC 74-66 x2
- LCC 74-99 x1
- LCC 74-100 x1
- LCC 74-101B x1

This kit includes elements which can be used to assemble a lineside warehouse in low relief version in O gauge.

Width: 322mm

Depth: 128mm

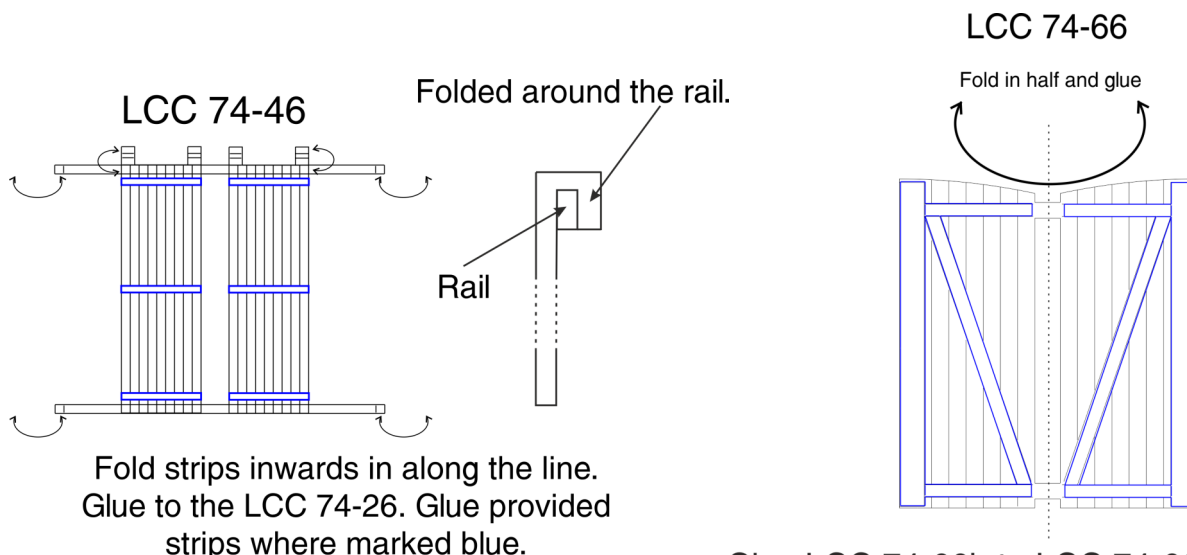
For more instruction go to manual which you can download from our website www.lcut.co.uk

All drawings are not in scale.

LCC Modelling System is flexible and you can make easy modification. Please visit our website at www.lcut.co.uk to shop for additional LCC elements.

! We recommend PVA or any other paper/wood glue.

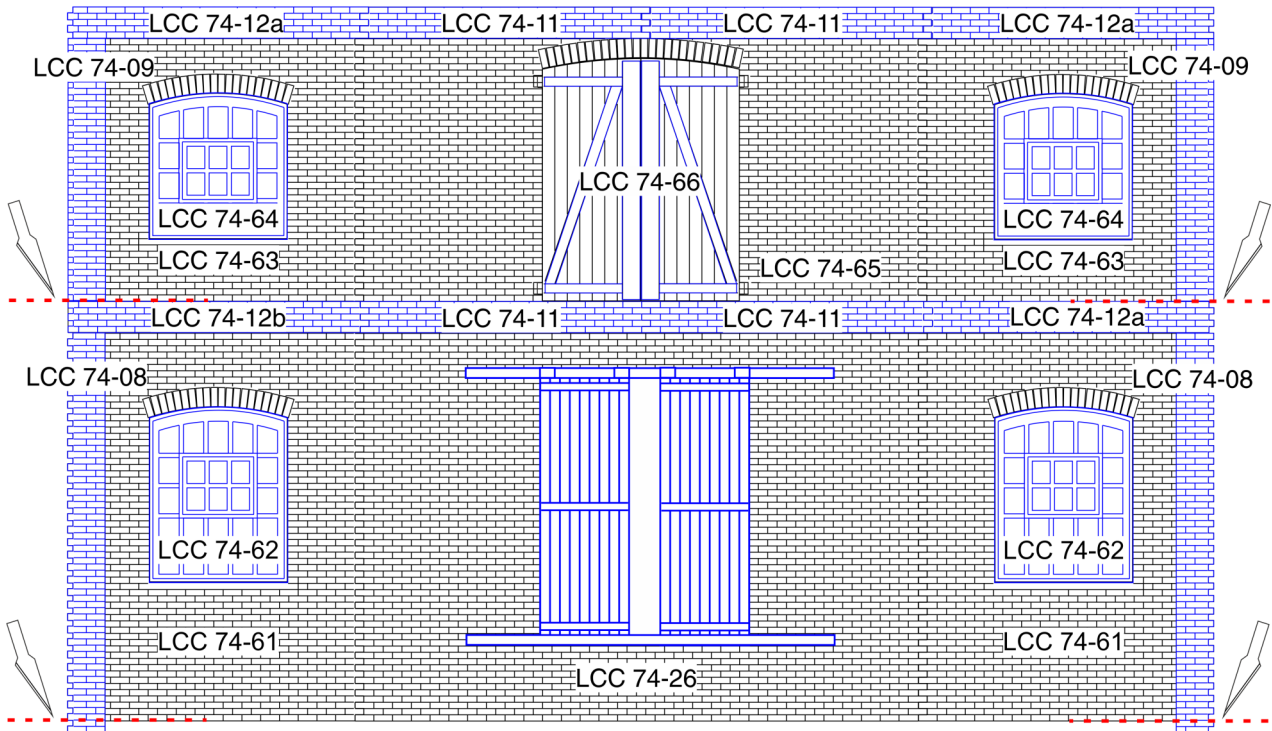
GATES



Glue LCC 74-66b to LCC 74-66a on top of engraved ironwork.

FRONT ELEVATION

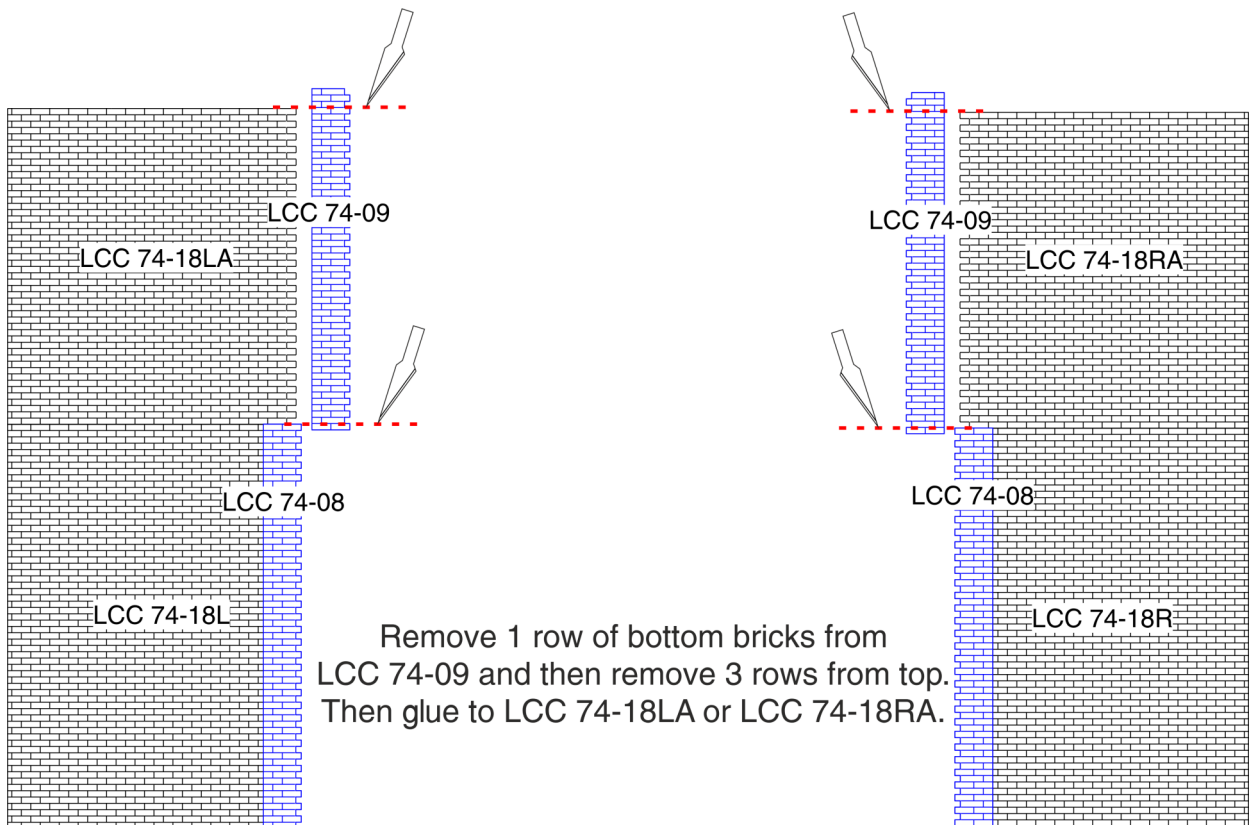
Trim LCC 74-09 to fit between decoration strips.
Trim LCC 74-08 to fit between the ground and decoration strips.



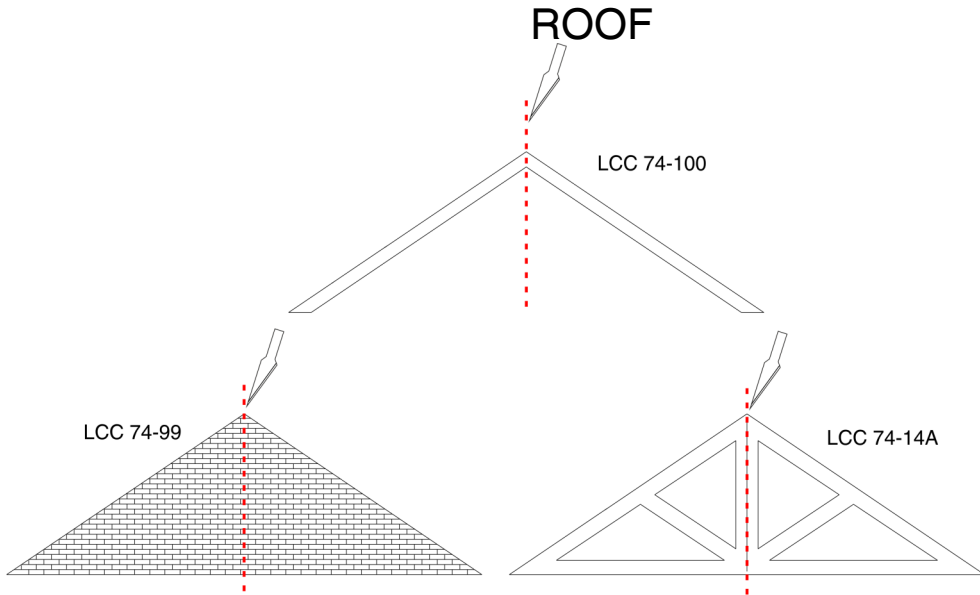
- Make sure to follow the “T” and “B” marking on LCC 74-11 and LCC 74-12a/b. Parts may not fit together if they are not glued in correct position (top or bottom) of LCC 74-06. In the case when parts have been cut out and mixed up dry fit them to ensure they will fit.

Before gluing LCC 74-11 and LCC 74-12 make sure the walls are as straight as possible. If there is some bowing occurring gently bend them back into shape. The material is quite forgiving but avoid excessive force.

SIDE ELEVATIONS

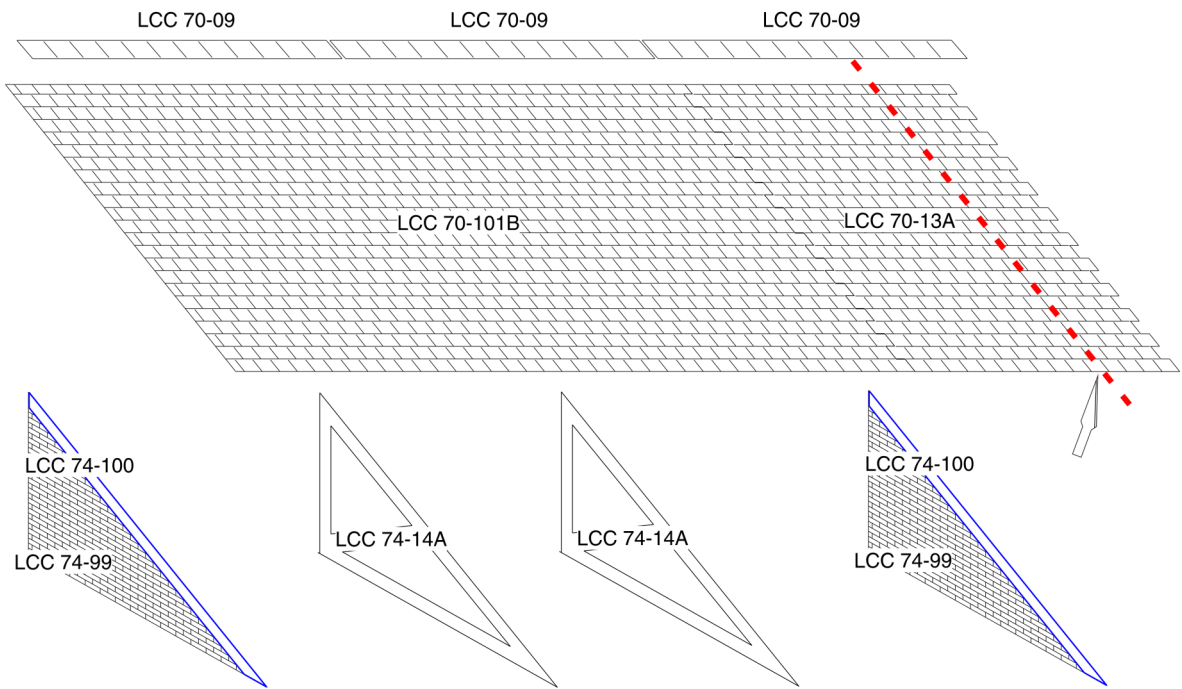


Remove 1 row of bottom bricks from LCC 74-09 and then remove 3 rows from top. Then glue to LCC 74-18LA or LCC 74-18RA.



Split LCC 74-99, LCC 74-14A and LCC 74-100 in the middle.
 Glue halves of LCC 74-14A together to double the thickness.

Trim LCC 70-101B or LCC 70-101A glued with LCC 70-13A to length of the building.
 Remember to count in the thickness of LCC 74-100.



LOADING PLATFORM

Trim LCC 74-44 to match length of LCC 00-41 wall panel.

